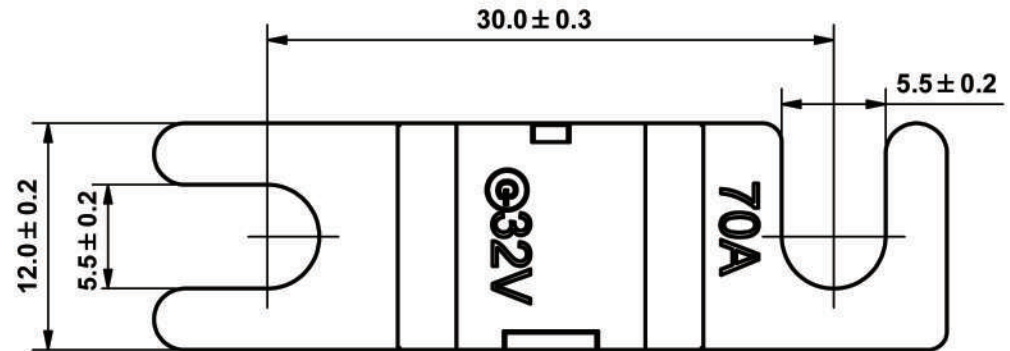
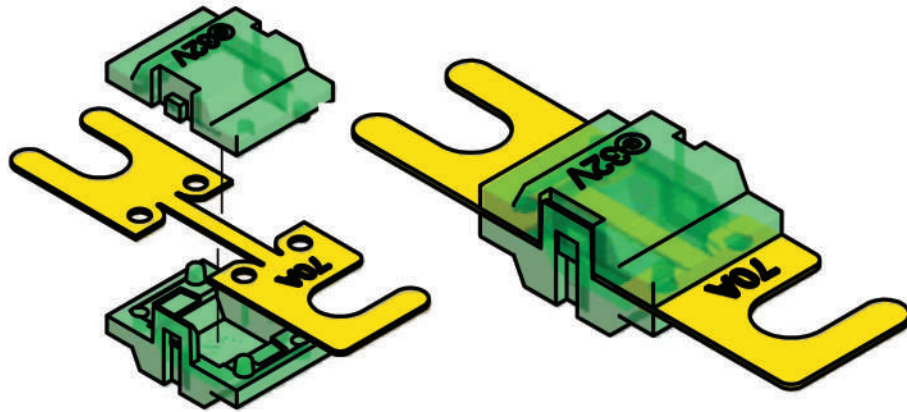
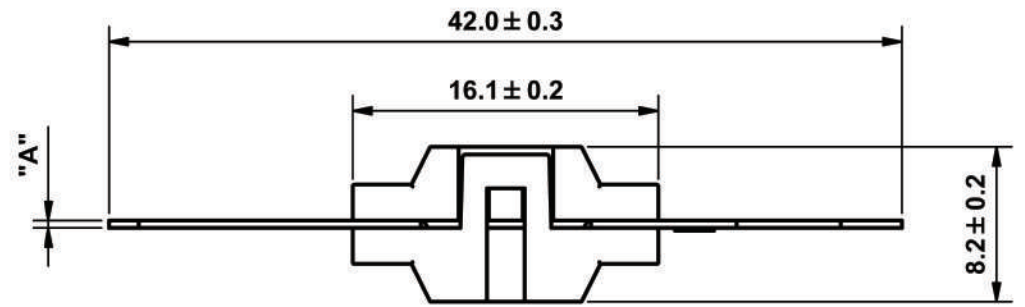


Rated Current	Rated Voltage	Color	Terminal Thickness DIM "A"	Test Cable
30A	32V	Orange	0.4 mm	2.5 mm ²
40A	32V	Green	0.4 mm	4 mm ²
50A	32V	Red	0.4 mm	6 mm ²
60A	32V	Yellow	0.4 mm	6 mm ²
70A	32V	Brown	0.4 mm	10 mm ²
80A	32V	Clear	0.4 mm	10 mm ²
100A	32V	Blue	0.4 mm	16 mm ²
125A	32V	Pink	0.4 mm	25 mm ²
150A	32V	Gray	0.4 mm	25 mm ²
200A	32V	Violet	0.5 mm	40 mm ²



Interrupting Ratings: 1000Amp at 32V DC
 Ambient temperature:-40~125 °C
 Fuse Mounting: M5 Threaded Stud And Hex Nuts
 Body: Polycarbonate
 Strip: Zinc Alloy (30~100A)/Copper Alloy(125~200A)
 Finishing:Gold ,Nickel ,Misty Nickel or Unplated

Time-Current Characteristics

% of Ampere Rating	Opening Time
100%	Min 100hrs.
110%	Min 4hrs.
150%	60~3600 sec
200%	1~100 sec
300%	0.3~15 sec

UNLESS OTHERWISE SPECIFIED DIMENSIONS ARE IN MM TOLERANCE DECIMALS ANGULAR X ± 0.5 ± 2' XX ± 0.25 DO NOT SCALE DRAWING		CUSTOMER NO.	DONGGUAN TIANRUI ELECTRONIC CO., LTD
		DRAWN BY	TITLE
P/N		CHECKED BY	Bolt-on Fuse
REV A		APPROVED BY	
		DATE 2009/1/21	PART NO. ANS
		SCALE	DRAWING NO. BA03102400